

North Canterbury Deerstalkers Association

Range Standing Orders



NZDA NORTH CANTERBURY BRANCH RIFLE RANGE

RANGE STANDING ORDERS

Dated 7 May 2024

New Zealand Deerstalkers Assoc

599 McLeans Island Road

Harewood, Christchurch

Range Standing Orders are written to ensure all **Club Members and All Range Users** are aware of the conditions that apply to these ranges.

Safety **MUST** be your prime consideration when using the NZDA Range

All persons not actively involved in the current shooting are to remain at least 2m behind the shooting line or starting position and must remain quiet so as not to interfere with the giving of instructions by any Range Officers.

1 Shooting range/multi-range site (complex) name

North Canterbury Deerstalkers rifle range, Burnett Range

2 Names of individual ranges (if applicable)

Range 1 - 50m, Range 2 - 100m, Range 3 - 200m, and the Norm Pearce 50m Range

3 RSOs date (date RSOs were authorised)

7 May 2024

4 Introduction

Information about the range

4.1 The Burnett Range complex is a shared range leased to the Canterbury Shooting Federation, made up of NZDA North Canterbury, Christchurch Pistol Club, and Canterbury Outdoor Target Shooting. Each individual Shooting Range Operator governs and maintains their designated area independently.

The legal title of the land on which the range is located, and any associated land affected by the range danger area <i>(if different)</i>
4.2 Lot 1 DP 28931 having an area of 7.0061 hectares more or less
The name of the landowner(s) or controlling authority that approve the use of their land as a shooting range
4.3 Leased to Canterbury Shooting Federation Incorporated by The Canterbury Regional Council (formerly the North Canterbury Catchment Board whose property vested in The Canterbury Regional Council under the Local Government {Canterbury Region} Reorganisation Order 1989)
Hours of operation
4.4 Open 24 hrs, 7 Days a week, as defined by the Branch Executive.
5 Responsibility
Name of the SRO <i>(who is responsible for the overall safe operation of the range)</i>
5.1 North Canterbury Deerstalkers Association.
The person in charge of the day-to-day administration, management, and maintenance of the range <i>(if not the SRO)</i>
5.2 The North Canterbury Deerstalkers Association Club Committee.
6 Compliance with Range Standing Orders (RSOs)
6.1 All users of the NZDA Range are subject to these Range Standing Orders. <u>(THERE ARE NO EXCEPTIONS)</u> .
6.2 User organisations permitted use of these facilities will have use approvals withdrawn if they do not adhere to these Range Standing Orders.
7 Range Location
7.1 599 McLeans Island Road, Harewood CHRISTCHURCH.
NZTM map sheet number and grid reference
7.2 NZTM BX23 Lincoln, Grid reference E1559863 N5186995
8 Approved range users and priority of use
8.1 North Canterbury Branch NZDA Other New Zealand Deerstalkers Association Branches Canterbury Shooting Club Christchurch Pistol Club Other Shooting entities under agreement of NC NZDA Range committee.
9 Warning flags and danger signs
9.1 The Red Range Flag must be flown at the following locations prior to commencement of any live firing of the applicable range. <ol style="list-style-type: none"> 1. On the flagpole at the entrance to Range 1-3 boundary. 2. On the flagpole at the shooting station of Range 4. 3. Warning signs to be placed along the boundary fence at regular intervals and must be able to be seen at all times when the range is in use.

**10 Description of individual ranges, restrictions, and conditions of use
(in numerical order)**

Range 1 (Number or name):	Range 1 - 50m
Range description	
10.1	50m Outdoor Rifle, Reduced Danger Area Range with pop-over
Restrictions	
	<ul style="list-style-type: none"> • Rifles up to and including .458 calibre. • Black Powder Rifles up to and including .78 calibre.
Conditions of use	
	<ul style="list-style-type: none"> • All firing must be from the designated 50m firing point. • Targets must be positioned in the approved configuration and placed in approved target holders. • All targets are to be placed as close to bullet catcher as possible. • No Steel Targets or re-active targets are to be used on Range 1.
Range 2 (Number or name):	Range 2 - 100m
Range description	
10.2	100m Outdoor Rifle, Reduced Danger Area Range with pop over.
Restrictions	
	<ul style="list-style-type: none"> • Rifles up to and including .458 calibre. • Black Powder Rifles up to and including .78 calibre.
Conditions of use	
	<ul style="list-style-type: none"> • All firing must be from the designated 100m firing point. • Targets must be positioned in the approved configuration and placed in approved target holders. • All targets are to be placed as close to bullet catcher as possible. • No Steel Targets or re-active targets are to be used on Range 2.
Range 3 (Number or name):	Range 3 - 200m
Range description	
10.3	200m Outdoor Rifle, No Danger Area Range.
Restrictions	
	<ul style="list-style-type: none"> • Centrefire Rifles up to and including .458 calibre, with the exclusion of rifles chambered for Pistol cartridges, or Rimfire cartridges. • Black Powder Rifles up to and including .78 calibre.

Conditions of use	
	<ul style="list-style-type: none"> • All firing must be from the designated 200m firing point. • Targets must be positioned in the approved configuration and placed in approved target holders. • All targets are to be placed as close to bullet catcher as possible. • No Steel Targets or re-active targets are to be used on Range 3.
Range 4 (Number or name):	Range 4 - Norm Pearce 50m Range
Range description	
	10.4 50m Outdoor Pistol/Rifle No Danger Area Range.
Restrictions	
	<ul style="list-style-type: none"> • Pistols up to and including .50 calibre with a muzzle velocity no greater than 1600fps. • Rifles up to and including .458 calibre. • Black powder firearms up to and including .75 calibre with a muzzle velocity no greater than 2148fps.
Conditions of use	
	<ul style="list-style-type: none"> • Only members of the Christchurch Pistol Club and the Canterbury Shooting Club are approved to conduct target pistol shooting on this range. • When conducting target pistol shooting, the RO must be a qualified Pistol NZ RO. • All firing must be from the established 50m firing point forward to the 10m firing point. • All targets must be placed directly at the backstop only. • Steel targets are approved for use on this range. • Moving targets are approved for use on this range and can only be engaged between the left and right arc markers.
11 Range safety roles	
<p>11.1 The SRO is responsible for the operation of the range complex, compliance with the Arms Act and Arms Regulations, and overall safety.</p> <p>11.2 A North Canterbury Branch approved Officer on Duty holding a current NZDA Range Officer (RO) warrant must be on duty whenever a range is in use. The RO shall be:</p> <ol style="list-style-type: none"> 1. An experienced and qualified person approved by the SRO who hold a firearms licence and be appropriately trained in shooting range safety management. The RO must be knowledgeable of these RSOs before overseeing any shooting on a range. 2. The RO is responsible for the safe conduct of the shooting activity they are acting as RO for. 3. The RO is responsible for recording in the RO logbook their name, and the date they were on duty. 4. The RO is responsible for reporting of any breach of the RSOs to the SRO immediately. 5. If an individual uses the range, they must be RO qualified. 6. When conducting target pistol shooting on Range 4, the RO must be a qualified Pistol NZ RO. 7. Any other qualified safety officer may be appointed as required or as directed by the RO. 	

12 Range safety rules

12.1 A copy of the current Range Standing Orders and Range Rules are to be prominently displayed at the Range.

1. The red flag at the shooting station is to be raised when the ranges are in use.
2. All firing must be from the designated firing point.
3. Firearms must be handled with the utmost care and be carried or stored with the actions open at all times, the use of breech flags is highly recommended.
4. Firearms must be loaded only at the firing point and the shooter must ensure that the muzzle is always pointing in a safe direction.
5. On the raising of a red flag or on the command "Cease Fire" from the Supervising Range Officer all firing must cease immediately, and all shooters must extract magazines, and cartridges from the breach and leave open all bolts and actions. The use of breech flags is highly recommended.
6. Shooters must ensure that no cartridges are left in the firearm on completion of firing. The Supervising Range Officer must inspect each firearm to ensure this before releasing the squad or detail from the firing point. Shooters are to remain in their firing positions until they are released by the Supervising Range Officer.
7. All firearms used on the range must be in good mechanical condition and adjusted so that they will function safely.
8. In the event of an accident, misfire, or malfunction call the Supervising Range Officer immediately.
9. Any shooter who is aware of any behaviour, firearm, or cartridge condition likely to cause danger must bring such behaviour, firearm, or cartridge condition to the notice of the Supervising Range Officer.
10. No shooter may be on the range while under the influence of alcohol or unlawful drugs.
11. Any firearms on the Range whether in racks, in transport, or in transit to and from the firing point must be in the open position for their type of action. Only on the firing point when firing is about to commence may the action be closed.
12. Except when a Range Officer or other responsible official considers that they have been left in a dangerous manner, no person may handle another shooters firearms, ammunition or other equipment without their permission.
13. Should it be necessary to chamber a loaded cartridge to test a cartridge and firearm mechanism a range officer must be notified, and permission obtained. The muzzle must point in a safe direction (down range) throughout the check procedure.

12.2 Approved shooting activities are:

- a. Ranges 1, 2, and 3 - Rifle including Black Powder (Rifle only).
- b. Range 4 (Norm Pearce 50m Range) - Pistol and/or Rifle including Black Powder firearms.

13 New ammunition use

13.1 If a new type of ammunition is proposed for use on the range, it must be approved for use by the SRO, if considered safe to do so. Before inclusion in the RSOs, the requirements of section 34 of these orders are to be adhered to.

13.2 Unsafe ammunition may not be fired on the range. Unsuitable handloaded or factory ammunition may be excluded at the discretion of the Range Officer

14 Targets

14.1 Only targets approved by the Club Committee are permitted to be used on club ranges.

14.2 The Range Officer is to ensure target placement complies with these RSOs for each range in use. The target system is to be positioned so that no projectiles can escape the range danger area.

14.3 Approved target centre heights:
a. Range 1 (50m) and 2 (100m) – 1.2m
b. Range 3 (200m) – 1.8m
c. Range 4 (Norm Pearce 50m Range) - 1.1m

14.4 New targets (target systems) must be approved by the Club Committee prior to use on any club range.

15 Steel targets

15.1 Range 4 Norm Pearce 50m Range is the only range approved for Steel Plate Target use.

- ONLY approved steel plate targets may be used. The recommended minimum grade of steel plate must have a Brinell hardness of 450 to 520 HB or equivalent.
- All steel targets to be inspected and approved by the Range Officer prior to use.
- All targets only to be placed in designated target holders.
- All non-reactive steel targets to be set at a forward sloping angle of 15 degrees from the vertical to reduce possible ricochets.
- Shrouds may be required where steel targets are outside a 20-degree plane of protection by the eyebrow.
- All firing must be from the designated 50m firing point forward to the 10m firing point.

16 Moving targets

16.1 Range 4 - Norm Pearce 50m Range is the only Range approved for moving target use.

- a. Left and Right arcs are to be indicated by brightly coloured posts. Firing outside these arcs is strictly prohibited.
- b. All target systems are only to traverse along the distance designated by target rail line.
- c. All firing must be from the designated 50m or 25m firing points.

17 Minimum safe engagement distances

17.1 Targets can only be shot at from the designated firing points. The designated firing point for Ranges 1, 2, 3 are collocated in line under the 200m covered firing point. The minimum engagement distances for each range are:

- a. Range 1 – 50m.
- b. Range 2 – 100m
- c. Range 3 – 200m
- d. Range 4 (Norm Pearce 50m Range) - From the 10m firing point.

18 Eye and hearing protection

18.1 Hearing Protection must be worn at all times when shooting is in progress.

18.2 Eye protection must be worn at all times when shooting Pistols.

19 Medical and emergency

19.1 First Aid kits are to be available on the range during all live firing. First aid kits are located in the firing point range shed and in the Clubrooms.

19.2 Emergency services contact:

- a. For serious injuries immediately Phone 111 via cell phone.
- b. A landline is available in the clubroom's kitchen or by landline connection below the meter board at the north end of the clubrooms. A landline and cable are located in the firing point range hut for this connection.
- c. Range Address: - 599 McLeans Island Road, Harewood, CHRISTCHURCH

20 Accident/incident procedure

20.1 **Accidents/incidents not involving a Firearm:** The following procedure is to occur:

- a. Cease Firing,
- b. Ensure the scene/situation is safe for all participants.
- c. Render immediate first aid and assess the need for evacuation of the casualty to the nearest medical facility or onsite recovery by emergency services.
- d. Notify the Club President or Secretary.
- e. Record all details in the Accident/Incident register.

20.2 **Accidents/incidents involving a firearm;** The following procedure is to occur:

- a. Cease Firing.
- b. Ensure the scene/situation is safe for all participants.
- c. Render immediate first aid and assess the need for evacuation of the casualty to the nearest medical facility or onsite recovery by emergency services.
- d. Notify the Police.
- e. Make no attempt to remove or strip the firearm.
- f. Preserve the scene.
- g. Those involved must remain on site until cleared by Emergency Services.
- h. Notify the Club President or Secretary.
- i. Record all details in the Accident/Incident register.

NOTE:

1. All HUNTs instructors have current first aid certification.
2. It is important that all users are aware of sect-20 Accident/incident procedures and fully comply with the procedure in the event of an accident or incident.

21 Fire precautions and procedures

21.1 The assembly area is in the Carpark adjacent to the NZDA Clubrooms. A Range Officer is to account for all personnel against the range attendance log.

21.2 Onsite firefighting equipment:

- a) 200 ltr water drums are located around the range at the firing point, Range Hut and 200 m target area.
- b) A firehose and 1000 ltr water tank are located at the north end of the NZDA Clubrooms along with 200 ltr water tanks at the clubroom downpipes.

21.4 Compliance with ECAN and Fire and Emergency NZ restrictions.

- a) All precautions are to be taken to reduce the possibility of fire in buildings and surrounding grounds.
- b) No fires are to be lit without prior committee and local authority approval.
- c) In the case of a fire Dial 111 and ask for the Fire Service assistance.
- d) Range Address: - 599 McLeans Island Road, Harewood, CHRISTCHURCH

22 Range Clearance

22.1 The Range Officer on Duty ensures all targets are dropped, the range flag is lowered, and all personnel are clear of the range,

- a) All users are to ensure that all range rubbish, including targets, ammunition boxes, etc. is removed from the range and placed in the appropriate container.
- b) No rubbish is to be left on the range complex.
- c) Upon completion of the days shooting the Red Range Flag is to be removed and stored.
- d) Any damage is reported to the Club Committee.

23 Unauthorised access and/or use of the range

23.1 The Range complex is only accessible through an electronic gate with issued FOB access NZDA 50,100, & 200m Ranges have a locked gate only with Range Officer Key access.

- a) Any individual or organisation given use of the range complex will have been provided with written authority by the Branch Executive. Any individual or organisation unable to provide this approval **MUST BE ASKED TO VACATE THE PROPERTY IMMEDIATELY.**
- b) Any refusal to leave is to be reported to the Police as soon as possible.
- c) Any unauthorised use of the Range Complex is to be reported to the Branch Executive.

24 Cone(s) of Fire (CoF)

24.1 A shooter must confirm their ability to achieve the approved Cone of Fire to the satisfaction of the Range Officer on Range 1 or 2, before progressing to Range 3 (200m range).

24.2

Cone of Fire: Rifle (Horizontal and Vertical) Standing 1.125 Degrees (20 Mils)		
<i>Distance (Metres)</i>	<i>Radius (Metres)</i>	<i>Diameter (Metres)</i>
25	0.49	0.98
50	0.98	1.96
100	1.96	3.92
200	3.93	7.86

25 Inability of the shooter to achieve Cone of Fire

25.1 If for any reason any shots fired fall outside the Cone of Fire the following procedure is to occur. The Officer on Duty/Range Officer is to:

- a. Halt all firing and identify the shooter responsible.
- b. Observe that shooters next shot and if it falls within the Cone of Fire allow that shooter to continue shooting.
- c. If the observed shot does not fall within the Cone of Fire, the shooter is to be provided with a suitable coach with the intention of bringing the next round within the Cone of Fire.
- d. Shooters who are unable to achieve the Cone of Fire are to be prevented from further firing. Shooters prevented from firing in this way may resume firing following the completion of a club approved training program with the firearm.

26 Unlicensed of inexperienced shooters

26.1 All unlicensed shooters will be under direct supervision of a firearms license holder.

27 Test firing

27.1 Test firing of new firearms or new ammunition types can only be done with the approval of the club committee.

27.2 If test firing is approved, it must be conducted under the direction of an RO and a correctly positioned target must be used.

28 Air danger height (ADH)

28.1 The ADH is 500 ft (150m) AGL

28.2 The RO will stop all firing if an aircraft is seen to enter or is about to enter the range danger area. The RO may resume live firing when the aircraft is clear of the range danger area.

28.3 It is the responsibility of all persons on the range that if an aircraft is seen to enter or is about to enter the range danger area, and the RO has not identified the intrusion, they are required to shout '**STOP**', and all shooting is to stop immediately. Only when the aircraft is clear may live firing resume under the instruction of the RO.

28.4 This shooting Range is located within 4km of an Airport facility. No additional safety requirements have been requested by the Airport Authority.

29 Range maintenance plan

29.1 Regular quarterly maintenance working bees are scheduled. A range report is compiled after scheduled shoots by the range officer to include any outstanding maintenance requirements, or resources required.

30 Children (minors)

30.1 All children are to be under the supervision of an adult at all times.

31 Health and hygiene

31.1 Health and hygiene considerations:

- a. After shooting and maintenance on the range, all persons are encouraged to wash their hands before eating, drinking, or leaving the range.
- b. Range maintenance in and bullet catchers should only be conducted by experienced personnel wearing protective equipment, i.e., masks and disposable overalls.

32 Domestic animals

32.1 Domestic animals are not to roam free anywhere on the complex whilst any of the ranges are in use.

33 Additional headings

33.1 N/A

34 Amendment to RSOs

34.1 Proposals to amend the RSOs are to be forwarded to the SRO. The SRO is to consider the amendment and accept or decline the proposal. If declined, the SRO is to advise the originator accordingly. If accepted, the SRO is to submit the proposal to the Clubs and Ranges Team at Te Tari Pūreke - Firearms Safety Authority. The Clubs and Ranges Team will review the proposal, consult with the SRO where necessary, and either approve or disapprove the amendment. If approved, the SRO can then include the amendment in the RSOs with a new effective date, provide a copy to the Clubs and Ranges Team, and distribute accordingly. All previous copies of the RSOs are no longer valid.

35 Authorisation of RSOs

35.1 These RSO's are authorised by the SRO.

36 Distribution list

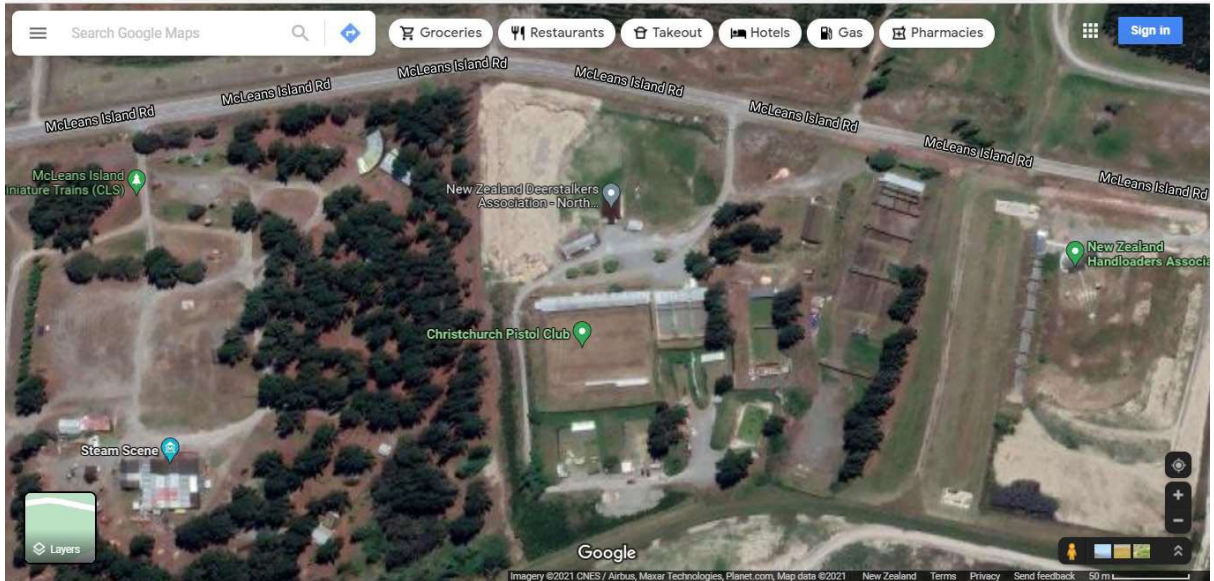
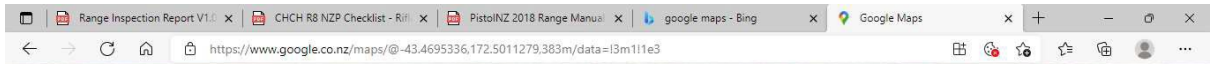
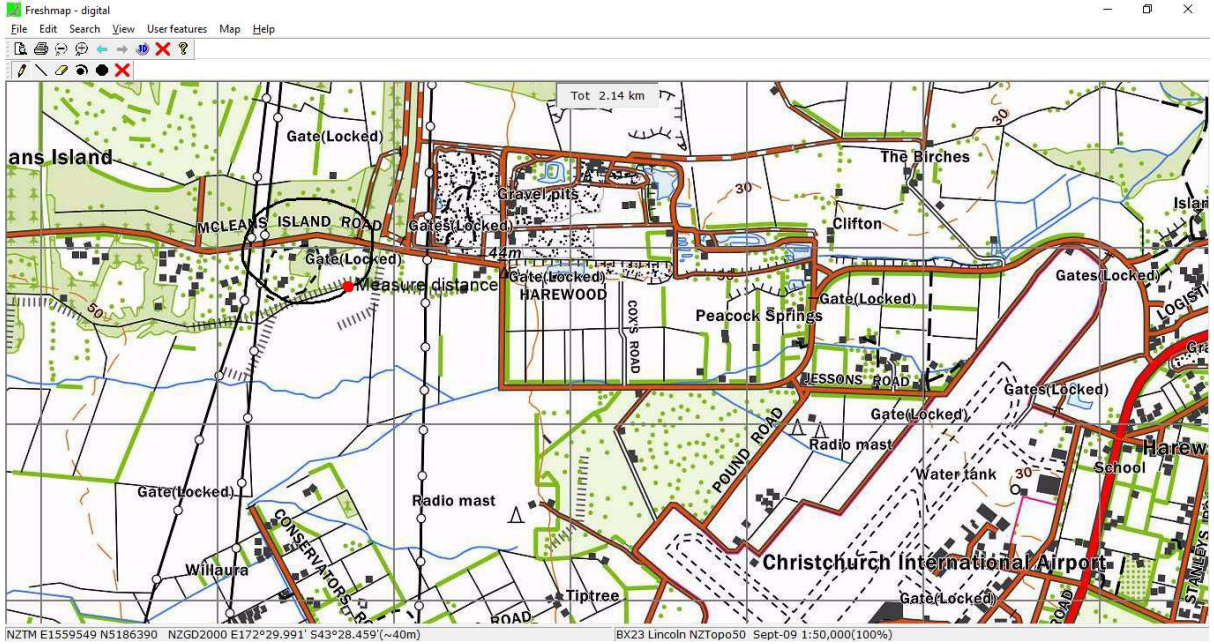
36.1

- 1) All NZDA, North Canterbury Branch Members.
- 2) Posted on Range 1-3 Notice board.
- 3) Posted on Range 4 Notice board.
- 4) Copy to Canterbury Shooting Club
- 5) Copy to Christchurch Pistol Club

37 Annexes (if required to supplement the main body)

Annex A: Range layout and location

Annex A:



B. Range danger area

A scale diagram illustrating the FDA/RDA including the boundary of the land approved for use as a shooting range, not required for a NDA range.

Annex B: N/A

C. Additional shooting organisations.

Annex C: Use of the Norm Pearce 50m Range - Christchurch Pistol Club / Canterbury Shooting Club

The North Canterbury Deerstalkers Club Committee approves the use of the Norm Pearce 50m Range by members of the Christchurch Pistol Club and the Canterbury Shooting Club. All approved Pistol NZ shooting activities may be conducted on the range within the 'Restrictions' and 'Conditions of use' listed in the Range Certificate.

A qualified Pistol NZ RO must be on duty whenever the range is being used for pistol shooting.

Rifle and Black Powder shooting are to be conducted in accordance with these RSOs.

D. Any other relevant information

Annex D: Contact information for North Canterbury Branch New Zealand Deerstalkers Assoc.

May 2023:-

Range Convenor Ian Brabbs pH.021 222 0849

Club President Geoff Feasey pH. 022 188 7719